



## MELE OHANA E-BLAST JANUARY – MARCH 2012

Aloha Kakou!

Hau'oli Makahiki Hou!

We hope everyone had the best of holidays and are ready to get rolling for the New Year!

There will be plenty of Hawaiian music coming to Eugene in the next few months that is pretty exciting, so be sure to check out the Calendar of Events section to see who is going to be performing and giving workshops.

There will also be a slight change in the frequency of EBlasts this year with it now being sent once every quarter, vs. monthly. So, it may be just a tad lengthier to capture three months' worth of activities, rather than one. If you have an event you'd like to share with us, please send us an email to let us know in little more in advance to make sure we get it posted. Deadlines are at the end of each quarter (March, June, September, and December). The next EBlast will be published the beginning of April to encompass April through June activities.

Wishing you all the best for 2012, and again, many thanks for your support and participation in the Hawaiian music community! Without you, we wouldn't have all of these opportunities available to enjoy! Mahalo nui!

A hui hou,

Maggie & Mele Ohana of Oregon

## CALENDAR OF EVENTS/CONCERTS/WORKSHOPS

A poster for an event titled "ALOHA FRIDAY" at Hodgepodge Hawaiian Grill. The text "Third Friday Every Month No Cover" and "Ono Grinds Beer &amp; Wine Ice Cream" is in the top right. The main text reads "MARK KAILANA NELSON" and "Maui to Memphis". Below that, it says "SHORT FILM: Hawaiian Folk Songs" and "OPEN MIC: HAWAIIAN FOLK • TRADITIONAL AMERICAN". The date and time are "January 20, 2012, 6-8 pm" and the location is "2130 West 11th (just west of Garfield), Eugene • 541-484-6300". The background features a photo of Mark Kailana Nelson playing a guitar.

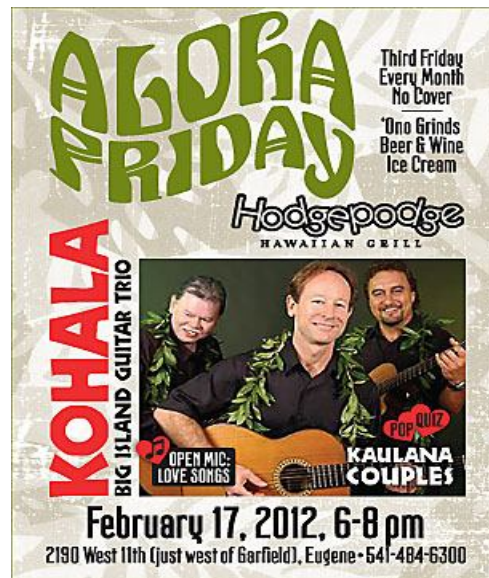
**The next Aloha Friday is January 20**, 6-8 pm at Hodgepodge Hawaiian Grill, 2190 West 11th in Eugene. Note that Aloha Fridays are now on the 3rd Friday of each month, not the 1st.

The featured guest will be **MARK KAILANA NELSON** who will be performing a **MAUI TO MEMPHIS** set, highlighting the cross-pollination between Hawaiian and American folk music. Mark is an awesome slack key guitarist, 'ukulele player, multi-instrumentalist and singer who lives near Jacksonville, Oregon who is accomplished in both traditional Hawaiian music and traditional Euro-American music. He's recorded numerous CDs in styles ranging from folk to Celtic to Polynesian to "uke-a-rama", and has published instructional books and videos on slack key, 'ukulele, dulcimer, and instrument making. For years he worked with Keola Beamer in putting on the annual Aloha Music Camp.

A short film on **HAWAIIAN FOLK SONGS**, created by the Kamehameha Schools for their annual song competition a few years back, and focuses on the development of "backyard" Hawaiian music, will also be shown.

Open Mic precedes the show; this month's theme: **HAWAIIAN FOLK & TRADITIONAL AMERICAN SONGS** which can be your favorite kanikapila songs, strumming-at-the-beach songs, sitting-around-the-campfire songs, hard-living-but-still-trucking songs, and so on. Sign up anytime after 5:30 at the event, or claim a spot now by contacting Buck at: planetbuck@earthlink.net. Emcee for the evening will be the wonderful Kim Donahey.

\*\*\*\*\*



**Feb. 17th:** On the night before Asian Celebration kicks off, check out an awesome program at Aloha Friday ... the band **KOHALA**, a guitar trio from the Big Island. They mostly play instrumental jazz with an island flavor, reflecting the beautiful landscape and traditions of the Kohala coast. Very nahenahe! They are also bringing a hula dancer and will do some traditional tunes with vocals. The group's lead player, Charles Michael Brotman, has won a Grammy and multiple Na Hoku Hanohano Awards. Don't miss this one folks! Since this is only 3 days after Valentine's Day, the open mic will call for LOVE SONGS, and the presentation will be a pop quiz on KAULANA COUPLES--famous couples of Hawai'i.

*Note: Looking for hosting availability for a couple of the musicians for Friday & Saturday nights. Please contact Maggie, if you are able to kokua! Thanks!*

\*\*\*\*\*

**March 16th: KAT GREENE**, from Ashland, will present a special program of songs and A/V on **THE IMMIGRATION EXPERIENCE**, telling the story of her parents' experiences moving from China to the US. This is a partner event with the Asian Celebration. For open mic , the theme will be for **SONGS FROM OTHER COUNTRIES**, and for the presentation we'll make a group **ANCESTRY MAP**.

## **WORKSHOPS**

MARK KAILANA NELSON will also be offering 'UKULELE & GUITAR WORKSHOPS on the day after Aloha Friday, which is Saturday, Jan. 21, at Our Saviour's Lutheran Church on Coburg Road (site of Mele 'Ohana kanikapila) at 2200 Coburg Rd. (1/2 block south of Beltline/Pape Hwy.)

**2:30-4 pm: HAWAIIAN SLACK KEY GUITAR.** Ki ho'alu, or slack key guitar, uses open tunings and fingerpicking to play both melodies and bass. Workshop will cover the basics: Taro Patch (open G) tuning, Hawaiian turnarounds, ornamentation (hammer-ons, pull-offs and slides) and those wonderful, slippery sixth harmonies. All guitarists are welcome, basic fingerpicking skills a plus.

**4:30-6 pm: SLACK KEY STYLE 'UKULELE.** Learn to play classic Polynesian melodies on your 'ukulele. You should know basic chords and strums, be willing to leave your comfort zone, and have a sense of humor. Best on concert and tenor 'ukulele with low G string.

Cost is \$25 per workshop, or \$45 for both. For more information or to register contact Maggie at (541) 484-5754 or [yasoualoha@comcast.net](mailto:yasoualoha@comcast.net)

**Mark will also be on KLCC radio, 89.7FM, on The Back Porch program, Saturday evening starting about 9:30 pm.**

\*\*\*\*\*

**BUILD YOUR OWN TREASURED CUSTOM UKULELE KEEPSAKE.  
CLASS INCLUDES DIRECTIONS AND INSTRUCTIONS ON BUILDING OUR BASIC TENOR UKULELE FOR \$500 (INCLUDING CHOICE OF OUR WOODS, GROVER MINI TUNERS, HILO STRINGS, ABALONE ROSETTE AND FRETT DOTS,  
AT THE END OF 6-8 WEEKS YOU WILL HAVE A FINISHED READY TO PLAY UKE THAT YOU WILL TREASURE AND HANG ON YOUR WALL TO DISPLAY.  
LIMITED SPACE PLEASE CALL PAT 541-914-6100 FOR MORE INFO AND TIME AND DATES.**

\*\*\*\*\*

## UPCOMING CONCERTS



### JOHN CRUZ

Award-winning Hawaiian singer-songwriter John Cruz stops at The Shedd on tour in support of his newest CD. John Cruz has distinguished himself as one of the most talented artists that has ever come from Hawaii. - **Sat. Feb 4 - 7:30pm – Jaqua Concert Hall, The Shedd Institute - [The Shedd Ticket Office 541.434.7000](tel:541.434.7000)**



### WILLIE K

Known for his onstage banter and quick wit, Willie K delivers a roller coaster ride of hot guitar that will wow even the most seasoned guitar aficionado. With a repertoire as diverse as his beloved Hawaii, he moves seamlessly from sweet island sounds to full on rock power cords. **Wed. February 8 - 7:30pm – Jaqua Concert Hall, The Shedd Institute - [The Shedd Ticket Office 541.434.7000](tel:541.434.7000)**



## MASTERS OF HAWAIIAN MUSIC

Four time Grammy-winner, master slack key guitarist George Kahumoku Jr., known as Hawaii's "Renaissance Man," Slack Key legend, Dennis Kamakahi, and Uncle Richard Ho'opi'i, performs music that is the real down-home sound of Hawaii. Highly respected masters, the 3 are delightful performers, all veterans of outdoor concerts to clubs to concert stages, a kolohe (a bit of the rascal in them), and always entertaining. - **Wed. March 14 7:30pm – Jaqua Concert Hall, The Shedd Institute - [The Shedd Ticket Office 541.434.7000](tel:541.434.7000)**



## HAPA

Barry Flanagan returns to The Shedd's Jaqua Concert Hall for Hapa's 5th appearance, joined by Hapa's newest member, Ron Kuala'au. – **Sat. Mar 17, 7:30 - 9:30 pm Jaqua Concert Hall, The Shedd Institute - [The Shedd Ticket Office 541.434.7000](tel:541.434.7000)**

## Coming in April...



*Keola Beamer & Raiatea  
Sat, Apr 28, 7:30 - 9:00 pm  
Jaqua Concert Hall, The Shedd Institute*

\*\*\*\*\*

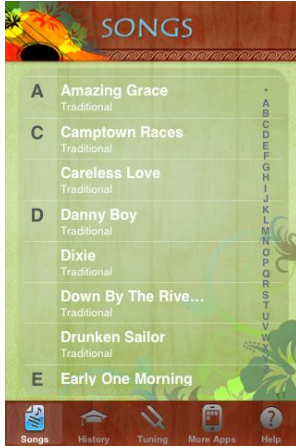
## MELE OHANA MEMBERS/IRON MANGO CALENDAR

- JAN 4 - Iron Mango practice – Our Saviour’s Lutheran Church - 7:00pm**
- JAN 13 - Kanikapila - Our Saviour’s Lutheran Church - 7:00pm**
- JAN 18 - Iron Mango practice – Our Saviour’s Lutheran Church - 7:00pm**
- JAN 20 – Aloha Friday w/Mark Nelson – Hodgepodge 2190 W. 11<sup>th</sup> – 7:00p (6pm open mic)**
- FEB 1 - Iron Mango practice – Our Saviour’s Lutheran Church - 7:00pm**
- FEB 10 - Kanikapila - Our Saviour’s Lutheran Church - 7:00pm**
- FEB 15 - Iron Mango practice – Our Saviour’s Lutheran Church - 7:00pm**
- FEB 17 – Aloha Friday w/Kohala– Hodgepodge 2190 W. 11<sup>th</sup> – 7:00p (6pm open mic)**
- FEB 18 or 19 – Iron Mango performance – Asian Celebration – Lane Events Center – TBA**
- MAR 7 - Iron Mango practice – Our Saviour’s Lutheran Church - 7:00pm**
- MAR 9 - Kanikapila - Our Saviour’s Lutheran Church - 7:00pm**
- MAR 16 – Aloha Friday – Hodgepodge 2190 W. 11<sup>th</sup> – 7:00p (6pm open mic)**
- MAR 21 - Iron Mango practice – Our Saviour’s Lutheran Church - 7:00pm**

# TECH/RESOURCE CORNER

## COOL APPS:

iPad, iPhone –



**Ukulele Songbook: All-Time Favorites**



**- Ukulele Tutor**

Droid -



**– Ukulele Fretboard**



**ClearTune Chromatic Tuner (for both devices)**

## New Releases



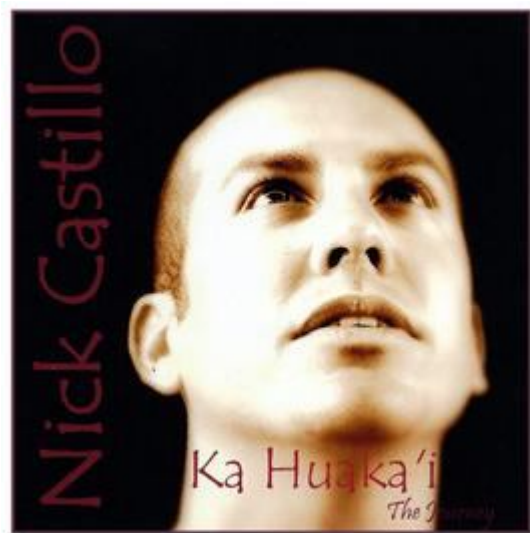
**Waimaka Helelei – Dennis Kamakahi & Stephen Inglis**



**Hula Pa'ina – Gary Medeiros**



**Hawaiian Sunday – Brian Vasquez**



**Ka Huaka'i – The Journey - Nick Castillo**



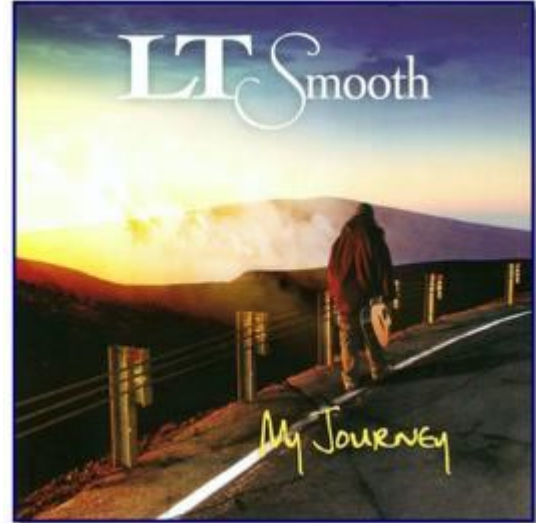
**'A – Nataalaie Ai Kamaau**



**Encounters of A Hawaiina Heart – Merv Oana**



**Hapa Haole Hit Parade  
Hot Steel & Cool Ukulele**



**My Journey – LT Smooth**

**Visit [Mele.com](http://Mele.com) for these and more releases!**

If you have other newsworthy items or events to let people know about, please email Maggie at [yasualoha@comcast.net](mailto:yasualoha@comcast.net) and we will put it in the next EBlast. If you wish to be removed from this emailing, please respond to it and put in the subject line “unsubscribe”. Mahalo!